

General Description

EMISSION CONTROL (AUX. EMISSION CONTROL DEVICES)

1. General Description

A: COMPONENT

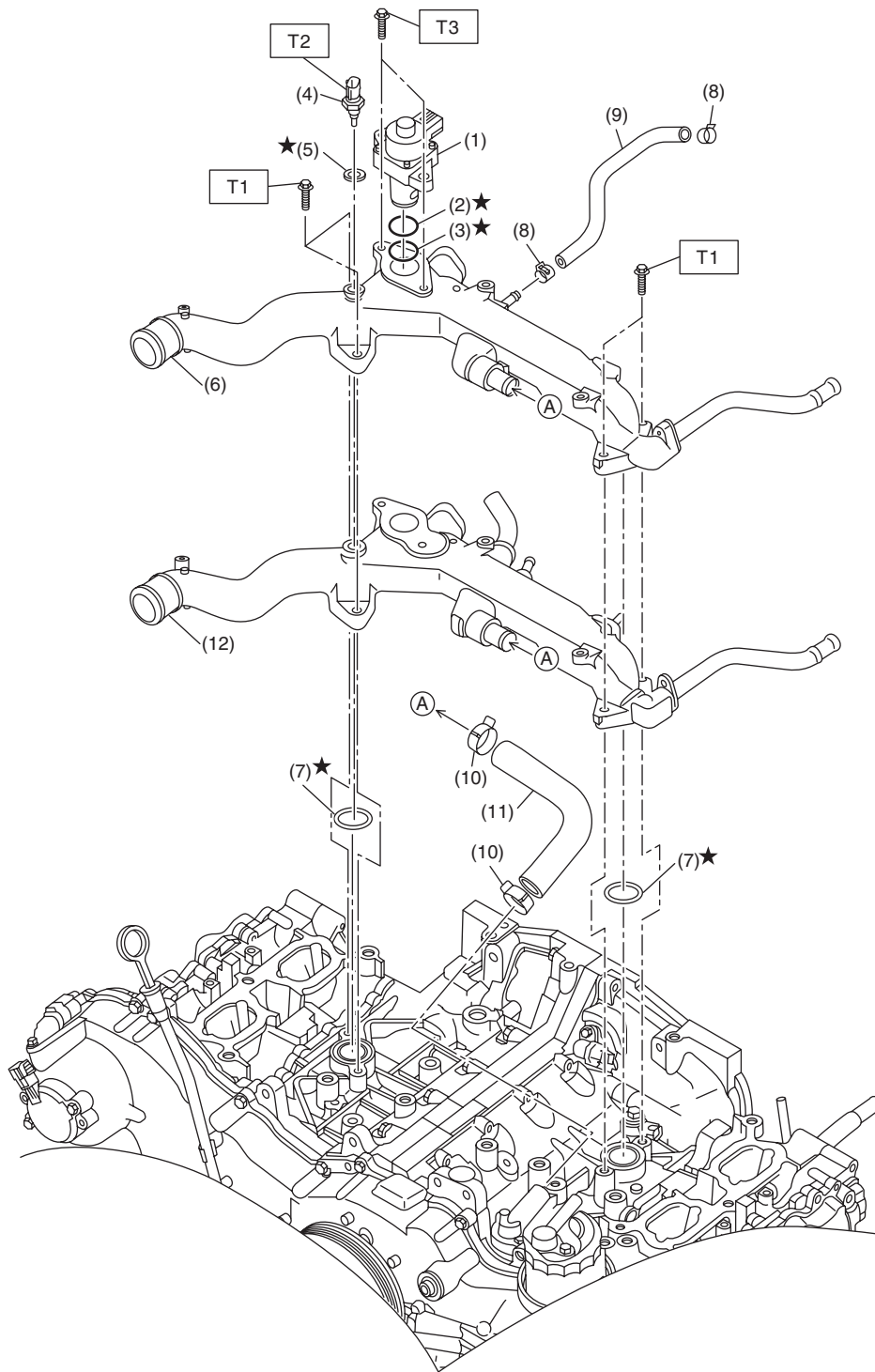
1. CANISTER, LEAK CHECK VALVE ASSEMBLY AND DRAIN SEPARATOR

For structures of the canister, leak check valve assembly and drain separator, refer to “FU (H4DO (w/o HEV))”. <Ref. to FU(H4DO(w/o HEV))-3, COMPONENT, General Description.>

General Description

EMISSION CONTROL (AUX. EMISSION CONTROL DEVICES)

2. EGR SYSTEM 1



EC-03534

- | | |
|---------------------------------------|----------------------------------|
| (1) EGR control valve | (7) O-ring |
| (2) O-ring | (8) Clip |
| (3) Gasket | (9) Preheater hose A |
| (4) Engine coolant temperature sensor | (10) Clip |
| (5) Gasket | (11) Preheater hose B |
| (6) Water pipe ASSY (MT model) | (12) Water pipe ASSY (CVT model) |

Tightening torque: N·m (kgf-m, ft-lb)

T1: 6.4 (0.7, 4.7)

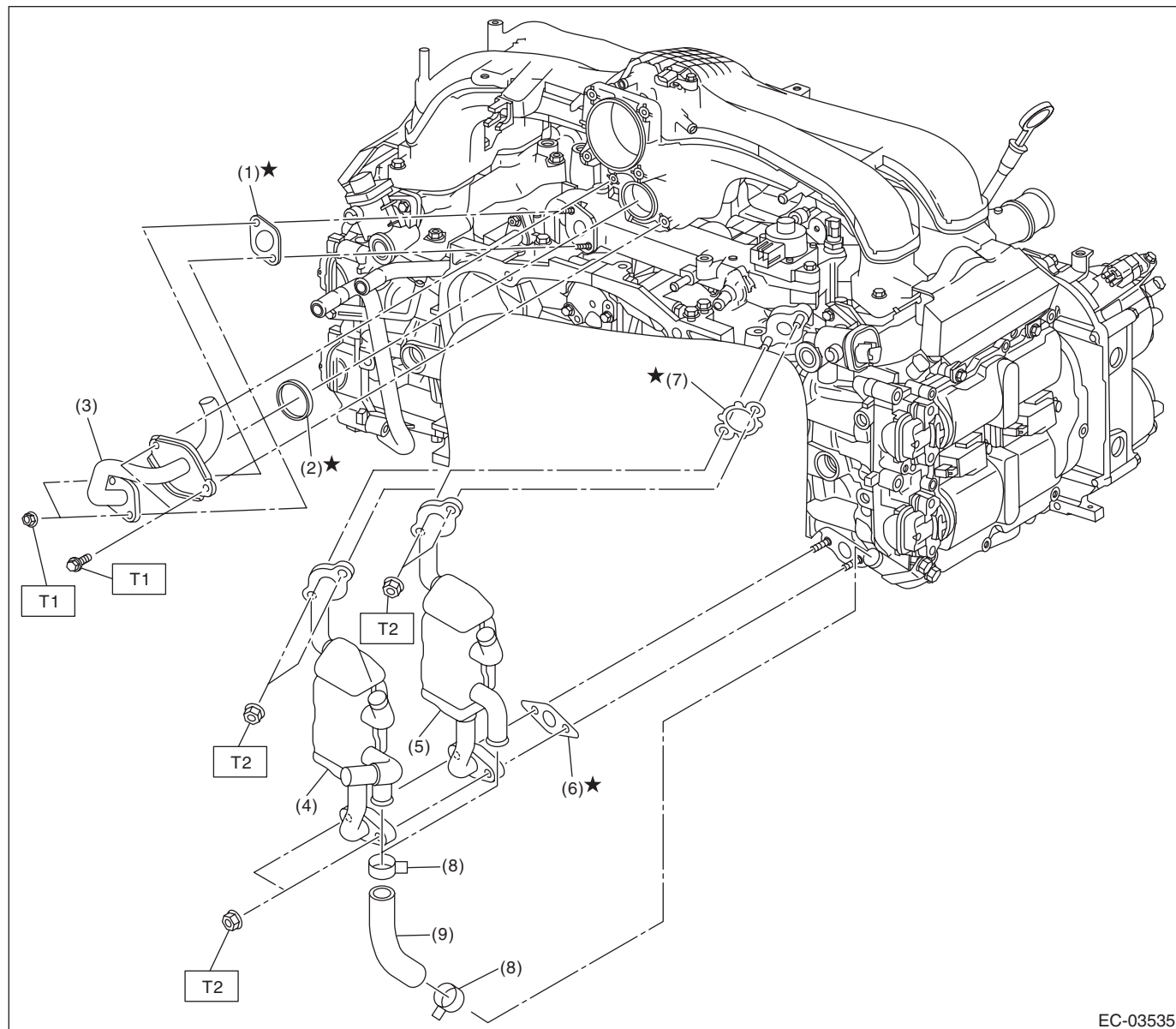
T2: 18 (1.8, 13.3)

T3: 22 (2.2, 16.2)

General Description

EMISSION CONTROL (AUX. EMISSION CONTROL DEVICES)

3. EGR SYSTEM 2



EC-03535

- | | |
|----------------------------|-------------------------|
| (1) Gasket | (6) Gasket |
| (2) Gasket | (7) Gasket |
| (3) EGR pipe | (8) Clip |
| (4) EGR cooler (CVT model) | (9) Engine coolant hose |
| (5) EGR cooler (MT model) | |

Tightening torque: N·m (kgf-m, ft-lb)

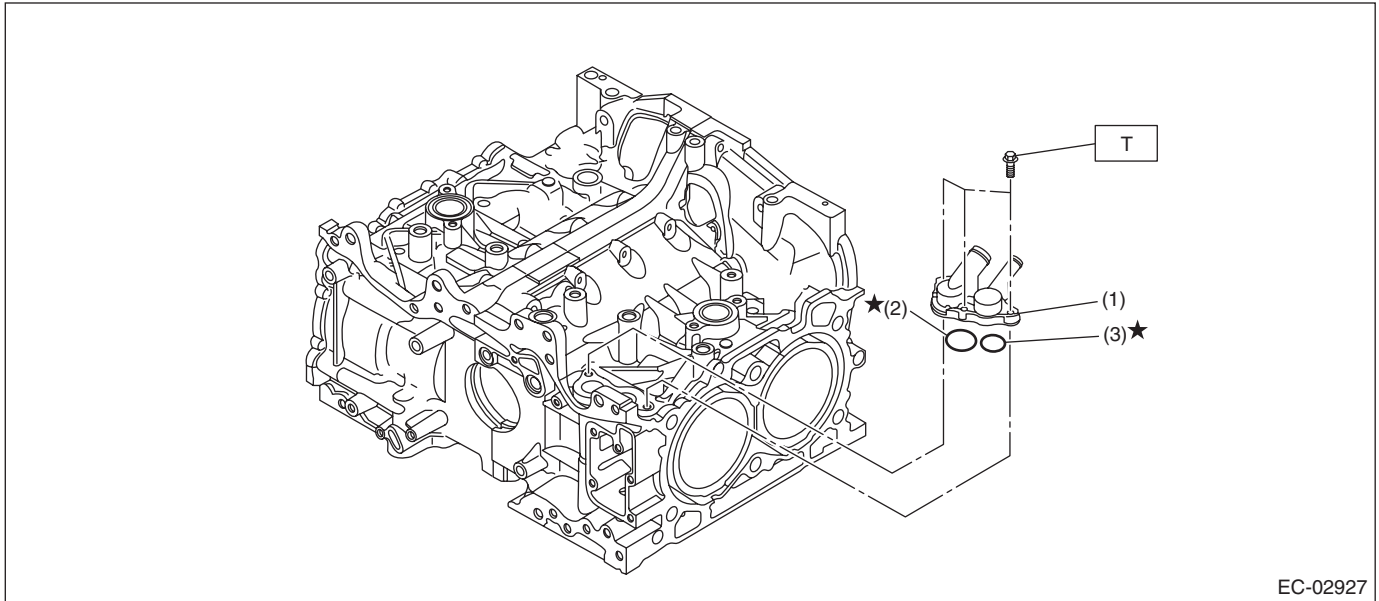
T1: <Ref. to EC(H4DO(w/o HEV))-30, INSTALLATION, EGR Pipe.>

T2: <Ref. to EC(H4DO(w/o HEV))-36, INSTALLATION, EGR Cooler.>

General Description

EMISSION CONTROL (AUX. EMISSION CONTROL DEVICES)

4. PCV SYSTEM 1



EC-02927

(1) PCV connector

(3) O-ring

(2) O-ring

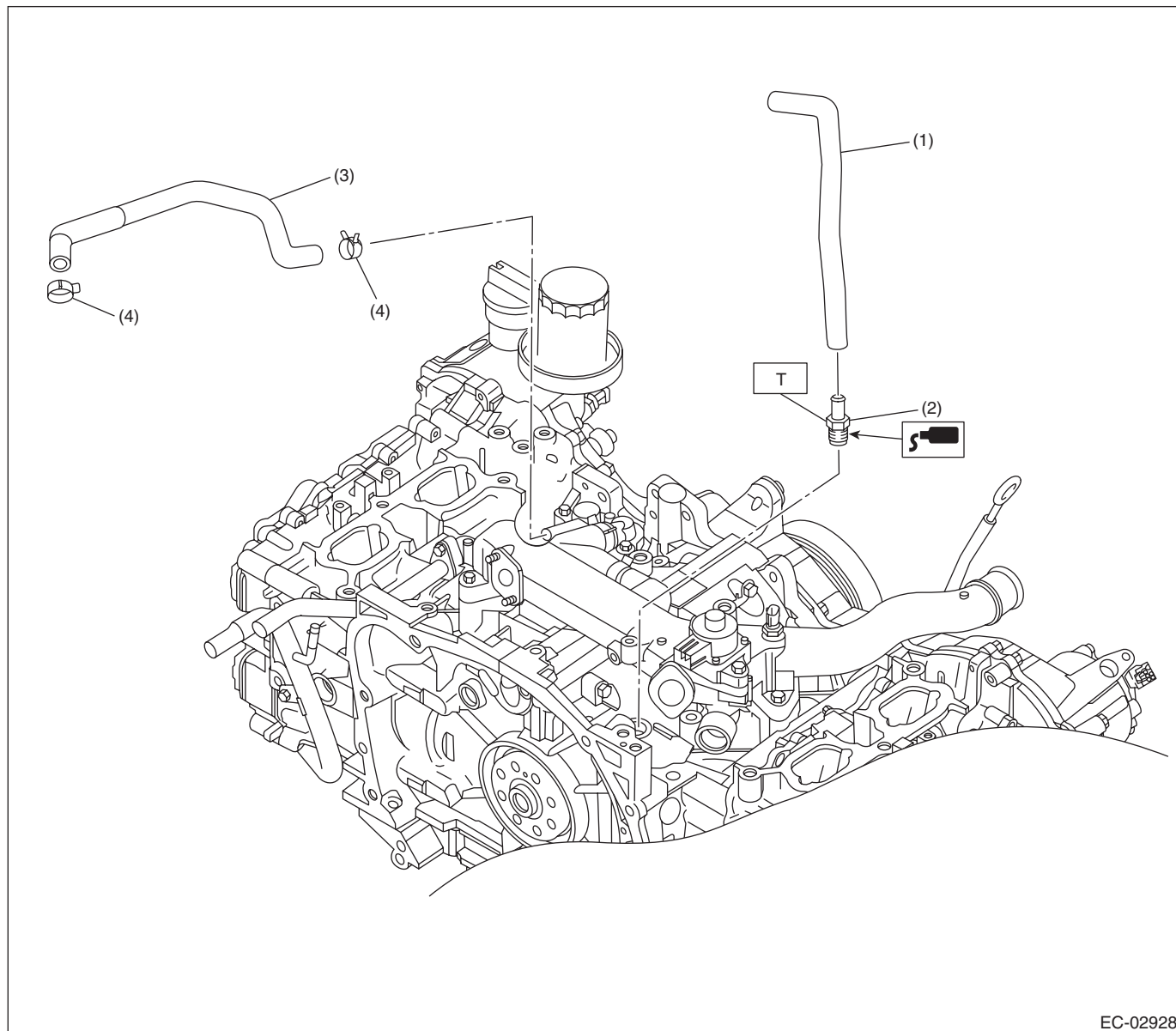
Tightening torque: N·m (kgf-m, ft-lb)

T: 6.4 (0.7, 4.7)

General Description

EMISSION CONTROL (AUX. EMISSION CONTROL DEVICES)

5. PCV SYSTEM 2



- (1) PCV hose A
- (2) PCV valve

- (3) PCV hose B
- (4) Clip

Tightening torque: N·m (kgf-m, ft-lb)
T: 23 (2.3, 17.0)

General Description

EMISSION CONTROL (AUX. EMISSION CONTROL DEVICES)

B: CAUTION

- Prior to starting work, pay special attention to the following:
 1. Always wear work clothes, a work cap, and protective shoes. Additionally, wear a helmet, protective goggles, etc. if necessary.
 2. Protect the vehicle using a seat cover, fender cover, etc.
 3. Prepare the service tools, clean cloth, containers to catch grease and oil, etc.
- Vehicle components are extremely hot immediately after driving. Be wary of receiving burns from heated parts.
- When performing a repair, identify the cause of trouble and avoid unnecessary removal, disassembly and replacement.
- Before disconnecting connectors of sensors or units, be sure to disconnect the ground cable from battery.
- Always use the jack-up point when the shop jacks or rigid racks are used to support the vehicle.
- Remove contamination including dirt and corrosion before removal, installation, disassembly or assembly.
- Keep the removed parts in order and protect them from dust and dirt.
- All removed parts, if to be reused, should be reinstalled in the original positions with attention to the correct directions, etc.
- Bolts, nuts and washers should be replaced with new parts as required.
- Be sure to tighten the fasteners including bolts and nuts to the specified torque.

C: PREPARATION TOOL

1. GENERAL TOOL

TOOL NAME	REMARKS
Circuit tester	Used for measuring resistance and voltage.